

Ungarischer Tanz Nr. V

f. Streichorchester

Johannes Brahms (Arr. C. Gayed)

9 *f*

19 *f* *sf* *f*

28 *p* *sf* *f marc.*

38 *p* *rit.* *a tempo*

46 *Vivace* *sf* *meno* *a tempo* *sf*

55 *p* *meno* *a tempo* *p* *meno* *a tempo* *f*

64 *f*

73 *p* *sf* *f marc.*

83 *p* *rit.* *a tempo* *f*

92 *f* *(div.)*

Eine Kleine Nachtmusik, K. 525

Mozart
Eine Kleine Nachtmusik, K. 525
Cello (Bass)

Allegro

6

12 *p* *sf* *p*

19 *sf* *p* *cresc.* *f*

25 *p* **A**

30

35 *f*

41 *p* **B**

47 *f*

51 *p*

Eine Kleine Nachtmusik, K. 525

56 *f* *p*

63 *f*

72 *p* *f* C

81 *p* 1

89 *sf* *p* *sf* *p* *cresc.* *f* 1

99 D *p*

105

112 *f*

117 *p* *f* 2

124 E *p*

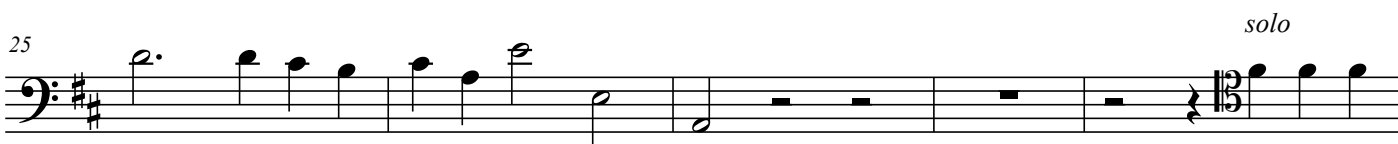
131 *f*

Detailed description: This image shows the bass clef part of the first movement of 'Eine Kleine Nachtmusik' by Wolfgang Amadeus Mozart. The score is in G major and 3/4 time. It consists of ten staves of music, numbered 56 to 131. The piece begins with a forte (*f*) dynamic and a repeat sign. The dynamics fluctuate throughout, including piano (*p*), fortissimo (*sf*), and crescendo (*cresc.*). There are several trills (marked with 'V') and slurs. Chordal changes are indicated by letters C, D, and E above the notes. The piece concludes with a final cadence and a repeat sign.

Hornpipe

aus: Water music

G F Händel, arr C Gayed



Hornpipe

2
40



46



50



54



58



62



66



70

da capo

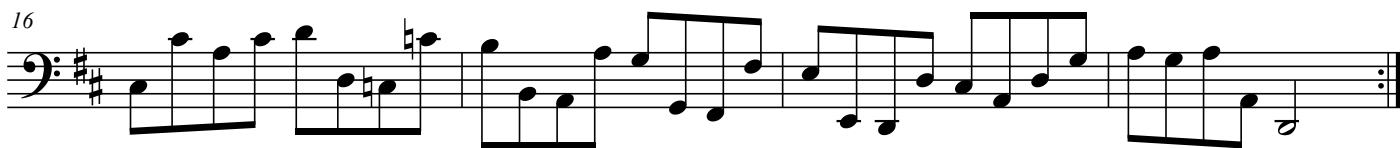


Cello

Air

aus Suite III., D-Dur

J S Bach



Rondeau

Cello

aus "Fairy Queen"

Henry Purcell

